

The background features abstract, overlapping geometric shapes in various shades of blue, ranging from light sky blue to deep navy blue. The shapes are primarily triangles and polygons, creating a dynamic, layered effect. The text is centered on a white background that is partially framed by these blue shapes.

# Little Chute Community Area Network

2021 Expansion Project

# Unique Collaboration Initiated for CARES Act – Focused on Needs of the Community

- ▶ The Village of Little Chute partnered with each of the three school districts to share resources received (\$37,675 of the \$212,985) from the Coronavirus Relief Fund made available to Wisconsin through the Federal Coronavirus Aid, Relief and Economic Security (CARES) Act.
- ▶ Allocation was based on the equalized value for each of the districts located in the Village.
  - ▶ Appleton School District - \$3,611 for Sneeze Guards and Disinfectant Wipes
  - ▶ Kaukauna School District - \$12,504 for Computer Monitors/Accessories
  - ▶ Little Chute School District - \$21,560 Chromebooks

Established Success Leads to Goal to Find  
Innovative Project Mutually Beneficial



# Little Chute Community Area Network History

In 2015-2016, through the cooperative efforts of the Village of Little Chute and the Little Chute Area School District, the LC CAN was built.

- ▶ Our vision was to facilitate greater access to high-speed internet communications for Village services such as public safety, land records, and local government databases, and will provide educational connections for the Little Chute Area School District.
- ▶ Our purpose is to help the Village and School District meet their technology needs in an affordable, budget conscious manner.
- ▶ Our design allows us the ability to build cooperative agreements for joint cloud based or Internet services or enable a conduit for delivery of cloud services as needed.
- ▶ Our goal is reduced communication costs through cooperation under a service-based model.

# 2021 LC CAN Expansion Project

- ▶ The recommended expansion will:
  - ▶ Enhance current facilities to extend to all water utility sites in the Village
  - ▶ Connection capability at the elevated tanks will expand the school districts reach of Wi-Fi broadband advantage to serve unserved or underserved households
- ▶ Allow for additional public safety and traffic control cameras
- ▶ Modernization of cybersecurity
- ▶ Provide a redundant connection to the internet for all our members
- ▶ Enhance management of the water utility to a greater extent while also providing new system development in metering, meter technology, and meter changes

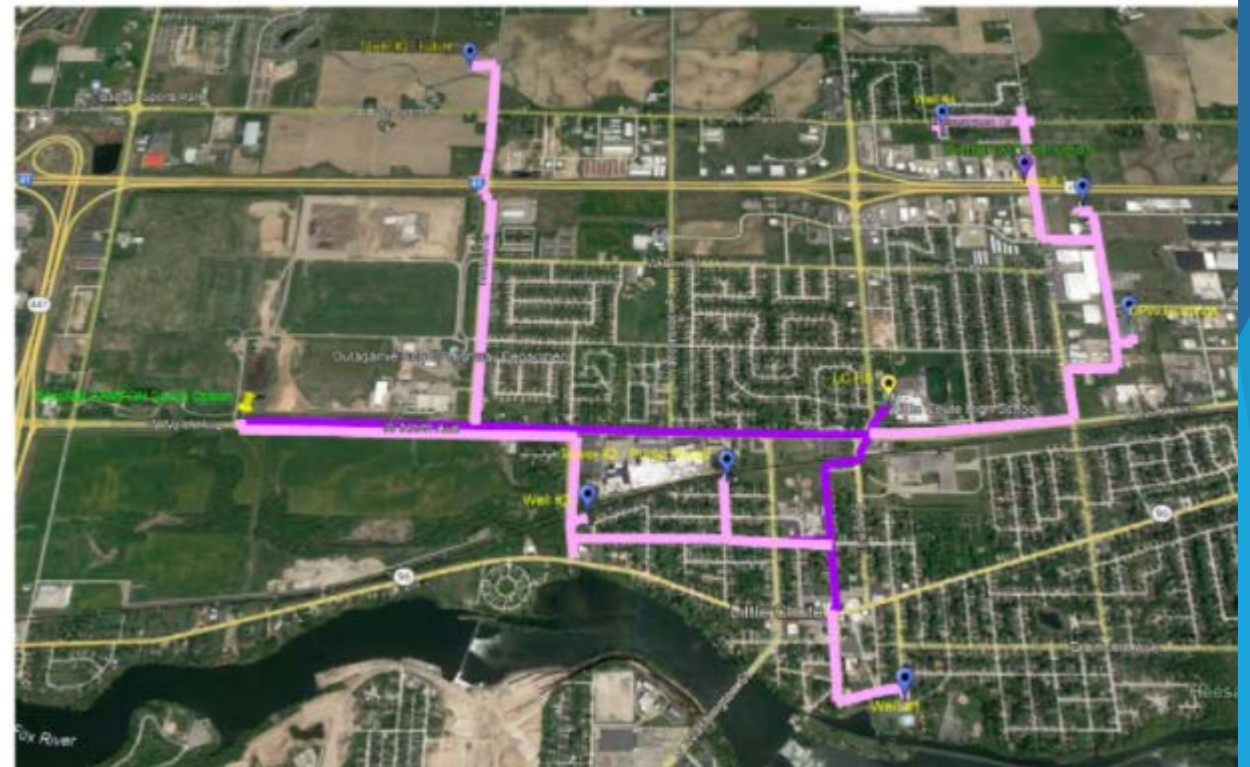


Image created by MCE

# Requirements of American Rescue Plan Act Compliance

- ▶ Reliably deliver minimum speed of 100 Mbps download and 100 Mbps upload counting number of households additionally served
- ▶ Broadband investments may be used to for modernization of cybersecurity including hardware, software and protection of critical infrastructure
- ▶ Clean Water State Revolving Fund projects include security measures at publicly owned treatment works
- ▶ The Drinking Water State Revolving Fund project eligibility includes Transmission and Distribution (customer and master meters), Water Security Projects (installation of security measures and supervisory control and data acquisition (SCADA) systems). NOTE: Focus is to serve existing population and those to serve population growth are prohibited,



# American Rescue Plan Act

Pre-project costs associated with planning and engineering are eligible uses of funds



## Cost Allocations

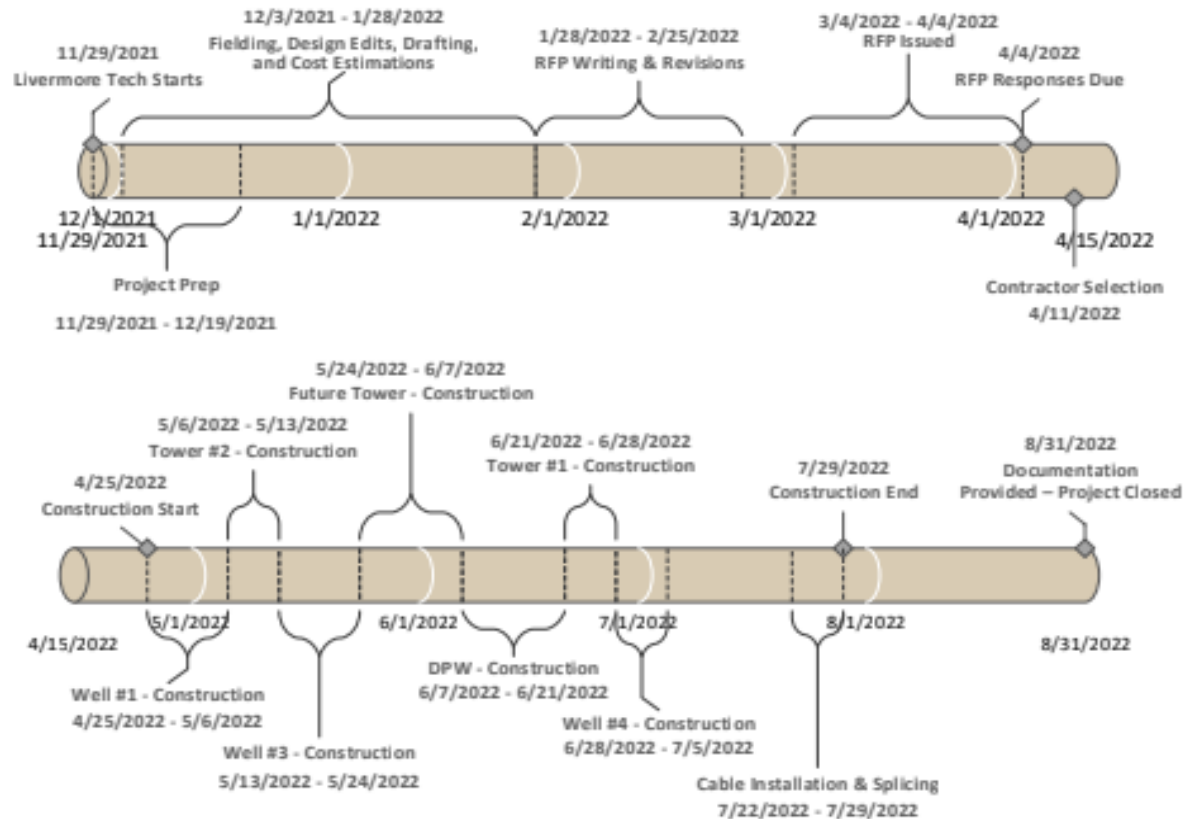
Initial construction planning will be split 50/50

Future phases will be evaluated as we progress through the design process



# Timeline

## Little Chute Community Area Network Construction Planning, RFP, & Construction PM Anticipated Timeline



- ▶ Village Board and School Board will act on project manager selection from request for proposal (RFP) sent out September 7 with an estimated project completion date of August 31, 2022.