

# New Insurance Administration System (IAS) 101

Local Employers

Employer Services Bureau



# Learning Objectives

Define IAS

Explain  
Rationale

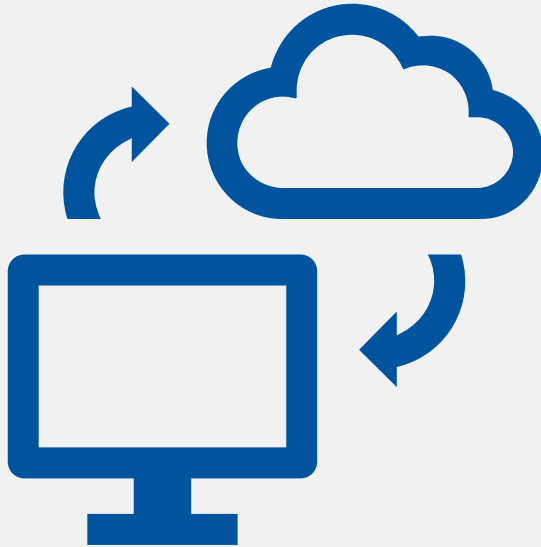
Describe  
New System

Identify  
Resources



# Define IAS

# IAS Definition



IAS = Inurance Administration System

Replace current system: MyETF Benefits (MEBS)

Will include other insurance programs

- Life, ICI, supplementals, etc.

ETF + Benefitfocus (vendor) → Benefitplace (software)

- = “My Insurance Benefits”

Go-live date: Summer 2024



# Explain Rationale

# New System Rationale

## Increase efficiency and ensure consistency

- One system for all *insurance* benefits
- Increased automation
- Reduced processing

## Accommodate increased membership

- New system is scalable platform



# Describe New System

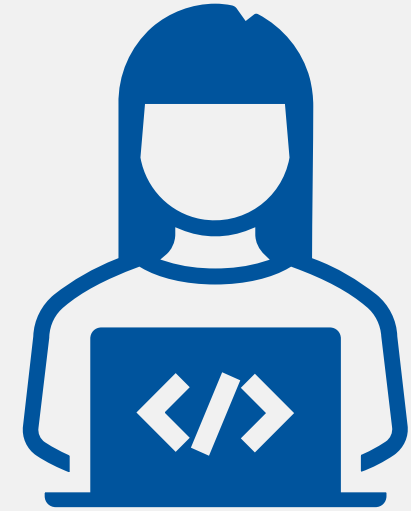
# New System Features

## Self-service functionality

- Employees will use Benefitplace
- Employers will help employees

## Addresses several needs

- Eligibility and enrollment
- Data management
- Reporting and analytics
- COBRA
- Communications and engagement







# Identify Resources

# Program Resources

Subscribe to ETF Email Updates

Visit ETF Website

- [etf.wi.gov](http://etf.wi.gov)
- Homepage → “Employers” drop-down → “Insurance Programs” → “IAS for Local Employers”

ETF Employer Communications Center

- 1-877-533-5020, option 2
- New: [ETF SMBESSNewEmployer@etf.wi.gov](mailto:ETF SMBESSNewEmployer@etf.wi.gov)
- Current: [ETF SMBEmployerInsurance@etf.wi.gov](mailto:ETF SMBEmployerInsurance@etf.wi.gov)

---

# Thank you

---



[wi\\_etf](#)



[etf.wi.gov](#)



ETF E-mail Updates



608-266-3285  
1-877-533-5020